



Subscribe to Caron Connections, our free eNewsletter

Enter your e-mail address

subscribe

The Yarn. The Web. The Experience.

Home

Yarns

Pattern Boutique

Designer Studio

Guide to Style

Cari's Blog

Where to Buy

Aurora Vest

designed by
Trevia G. McCain



Technique used: Crochet



[shop online](#)

[NaturallyCaron.com Spa](#)

(75% Microdenier Acrylic/25% Bamboo);

9 (12, 13, 15, 17) oz.

Shown in: #0007 Naturally

CROCHET HOOKS

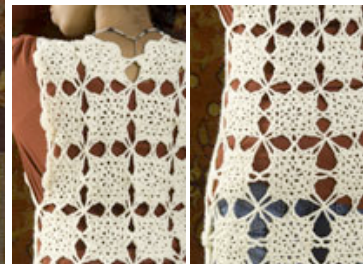
One size US F-5 (3.75 mm), or size to obtain gauge (for XS and L sizes only).

One size US G-6 (4.25 mm), or size to obtain gauge (for S and 1X sizes only).

One size US H-8 (5 mm), or size to obtain gauge (for M size only).

ADDITIONAL MATERIALS

Yarn needle



[click to enlarge](#)

[assembly diagram S/M](#)

[assembly diagram L/XL](#)



[Printer Friendly instructions](#)

SIZES

XS (S, M, L, 1X)

FINISHED MEASUREMENTS:

Bust 32 (36, 40, 48, 54)"/81.5 (91.5, 101.5, 122, 137) cm

Length 36 (40 1/2, 40, 40, 40 1/2)"/91.5 (103, 101.5, 101.5, 103) cm

GAUGE

One motif A = 4 x 4"/10 x 10 cm worked with F-5 (3.75 mm) hook;

One motif A = 4 1/2 x 4 1/2"/11.5 x 11.5 cm worked with G-6 (4.25 mm) hook;

One motif A = 5 x 5"/12.5 x 12.5 cm worked with H-8 (5 mm) hook.

STITCHES USED

Chain (ch), double crochet (dc), single crochet (sc), slip stitch (sl st).

SPECIAL TERMS

motif-join: A motif-join is worked instead of a ch-space. To begin a motif join always calculate one-half of the chains in the ch-space that is being replaced by the motif-join (e.g. if a motif-join is replacing a ch 4, one-half of the chains is ch 2). Work one-half of the chains, drop loop from hook, insert hook in corresponding ch-space of neighboring motif, insert hook back into dropped loop and draw through the ch-space, work the other half of the chains, and continue with instructions.

SPECIAL TECHNIQUE

Double-ring method: Holding the yarn a few inches from the end, wrap twice around your fingers. Remove rings from fingers and grip two rings and tail firmly between middle finger and thumb. Insert hook through center of ring and draw up a loop. Yarn over and draw through loop on hook. Work stitches of first round in the rings. Pull gently, but firmly, on tail to tighten ring.

NOTES

1. Weaving in ends as each motif is completed makes finishing much easier. A dab of fabric glue or fray check applied to cut ends will help prevent ends from working free.
2. Motifs A, B, C, D, and E differ only in the manner in which Round 4 is worked. The ch-sps in Round 4 are joined to neighboring motifs, if any. In addition, the length of the ch-sps at corners and on side edges depends on the exact location of the motif. Motifs A and B have slightly shorter ch-sps than Motifs C, D, and E. The longer ch-sps in Motifs C, D, and E allow the lower part of the vest to flare slightly, for a better fit. Refer frequently to the assembly diagram to determine placement of each motif.
3. Motifs are joined in ch-spaces of Round 4. The ch-8 and ch-10 spaces form internal corners and are joined to corresponding ch-8 and ch-10 spaces of neighboring Motifs. The ch-4 and ch-6 spaces form the sides or external corners and are joined to corresponding ch-4 and ch-6 spaces of neighboring motifs or left unjoined. Refer to assembly diagram for placement and location of joined edges.
4. Use F-5 (3.75 mm) hook for sizes XS and L. Use G-6 (4.25 mm) hook for sizes S and 1X. Use H-8 (5 mm) hook for M size.
5. To adjust the length of the vest, omit or add a row before the last row of motifs.
6. If a snugger armhole is desired, sew the edges of the lowest Motif's B together to desired armhole size.

MOTIF A (make 12 (12, 10, 28, 28))

With appropriate hook for desired size, form a ring using the double-ring method.

Round 1: Ch 5 (counts as dc, ch 2), [dc in ring, ch 2] 7 times; join with sl st in 3rd ch of beginning ch—8 dc and 8 ch-2 sps.

Round 2: (Sl st, ch 3, dc) in first ch-2 sp, ch 1, sk next dc, sc in next ch-2 sp, ch 1, [sk next dc, (2 dc, ch 2, 2 dc) in next ch-2 sp (corner made), ch 1, sk next dc, sc in next ch-2 sp, ch 1] 3 times, 2 dc in first ch-2 sp; join with ch 1, sc in top of beginning ch (join forms last ch-2 sp and completes first corner)—4 (2 dc, ch 2, 2 dc) corners, 4 sc, and 8 ch-1 sps.

Round 3: Ch 1, (sc, ch 4, sc) in first ch-2 sp (formed by join), ch 3, sk next 2 dc, sc in next ch-1 sp, ch 3, sk next sc, sc in next ch-1 sp, ch 3, sk next 2 dc, *(sc, ch 4, sc) in next ch-2 sp, ch 3, sk next 2 dc, sc in next ch-1 sp, ch 3, sk next sc, sc in next ch-1 sp, ch 3, sk next 2 dc; repeat from * around; join with sl st in first sc.

First Motif A

Round 4: (Sl st, ch 4, dc, ch 8, dc, ch 1, dc) in first ch-4 sp, sk next sc, sc in next ch-3 sp, (dc, ch 1, dc, ch 4, dc, ch 1, dc) in next ch-3 sp, sk next sc, sc in next ch-3 sp, sk next sc, *(dc, ch 1, dc, ch 8, dc, ch 1, dc) in next ch-4 sp, sk next sc, sc in next ch-3 sp, (dc, ch 1, dc, ch 4, dc, ch 1, dc) in next ch-3 sp, sk next sc, sc in next ch-3 sp, sk next sc; repeat from * around; join with sl st in 3rd ch of beginning ch.

Remaining Motif's A

Note: Refer to assembly diagram before working Round 4. As you work Round 4, join ch-sps of current motif to ch-sps along edges of any neighboring motifs using motif-join.

Round 4: (Sl st, ch 4, dc, ch-8 motif-join, dc, ch 1, dc) in first ch-4 sp, sk next sc, sc in next ch-3 sp, (dc, ch 1, dc, ch-4 motif-join, dc, ch 1, dc) in next ch-3 sp, sk next sc, sc in next ch-3 sp, sk next sc, *(dc, ch 1, dc, ch-8 motif-join, dc, ch 1, dc) in next ch-4 sp, sk next sc, sc in next ch-3 sp, (dc, ch 1, dc, ch-4 motif-join, dc, ch 1, dc) in next ch-3 sp, sk next sc, sc in next ch-3 sp, sk next sc; repeat from * around; join with sl st in 3rd ch of beginning ch.

MOTIF B (make 20 (20, 14, 20, 20))

Work as for motif A through Round 3.

Note: Refer to assembly diagram before working Round 4. As you work Round 4, join ch-sps of current motif to ch-sps along edges of any neighboring motifs using motif-join. Motif's B are not joined along the first side edge.

Round 4: (Sl st, ch 4, dc, ch-8 motif-join, dc, ch 1, dc) in first ch-4 sp, sk next sc, sc in next ch-3 sp, ([dc, ch 1] 4 times, dc) in next ch-3 sp, sk next sc, sc in next ch-3 sp, sk next sc, *(dc, ch 1, dc, ch-8 motif-join, dc, ch 1, dc) in next ch-4 sp, sk next sc, sc in next ch-3 sp, (dc, ch 1, dc, ch-4 motif-join, dc, ch 1, dc) in next ch-3 sp, sk next sc, sc in next ch-3 sp, sk next sc; repeat from * around; join with sl st in 3rd ch of beginning ch.

MOTIF C (make 24 (24, 24, 50, 40))

Work as for motif A through Round 3.

Note: Refer to assembly diagram before working Round 4. As you work Round 4, join ch-sps of current motif to ch-sps along edges of any neighboring motifs using motif-join.

Round 4: (Sl st, ch 4, dc, ch-10 motif-join, dc, ch 1, dc) in first ch-4 sp, sk next sc, sc in next ch-3 sp, (dc, ch 1, dc, ch-6 motif-join, dc, ch 1, dc) in next ch-3 sp, sk next sc, sc in next ch-3 sp, sk next sc, *(dc, ch 1, dc, ch-10 motif-join, dc, ch 1, dc) in next ch-4 sp, sk next sc, sc in next ch-3 sp, (dc, ch 1, dc, ch-6 motif-join, dc, ch 1, dc) in next ch-3 sp, sk next sc, sc in next ch-3 sp, sk next sc; repeat from * around; join with sl st in 3rd ch of beginning ch.

MOTIF D (make 14 (14, 14, 20, 18))

Work as for motif A through Round 3.

Note: Refer to assembly diagram before working Round 4. As you work Round 4, join ch-sps of current motif to ch-sps along edges of any neighboring motifs using motif-join. Motif's D are not joined along the first side edge.

Round 4: (Sl st, ch 4, dc, ch-10 motif-join, dc, ch 1, dc) in first ch-4 sp, sk next sc, sc in next ch-3 sp, ((dc, ch 1] 4 times, dc) in next ch-3 sp, sk next sc, sc in next ch-3 sp, sk next sc, *(dc, ch 1, dc, ch-10 motif-join, dc, ch 1, dc) in next ch-4 sp, sk next sc, sc in next ch-3 sp, (dc, ch 1, dc, ch-6 motif-join, dc, ch 1, dc) in next ch-3 sp, sk next sc, sc in next ch-3 sp, sk next sc; repeat from * around; join with sl st in 3rd ch of beginning ch.

MOTIF E (make 2)

Work as for motif A through Round 3.

Note: Refer to assembly diagram before working Round 4. As you work Round 4, join ch-sps of current motif to ch-sps along edges of any neighboring motifs using motif-join. Motif's E are not joined along the first 2 sides, nor joined at the corner between the first 2 sides.

Round 4: (Sl st, ch 4, dc, ch-10 motif-join, dc, ch 1, dc) in first ch-4 sp, sk next sc, sc in next ch-3 sp, ((dc, ch 1] 4 times, dc) in next ch-3 sp, sk next sc, sc in next ch-3 sp, sk next sc, (dc, ch 1, dc, ch 4, dc, ch 1, dc) in next ch-4 sp, sk next sc, sc in next ch-3 sp, ((dc, ch 1] 4 times, dc) in next ch-3 sp, sk next sc, sc in next ch-3 sp, *(dc, ch 1, dc, ch-10 motif-join, dc, ch 1, dc) in next ch-4 sp, sk next sc, sc in next ch-3 sp, (dc, ch 1, dc, ch-6 motif-join, dc, ch 1, dc) in next ch-3 sp, sk next sc, sc in next ch-3 sp, sk next sc; repeat from * around; join with sl st in 3rd ch of beginning ch.

TIE (make 2)

With F-5 (3.75mm) hook, leaving an 8"/20.5cm tail, ch 51.

Row 1: Sc in 2nd ch from hook and in each ch across—50 sc.

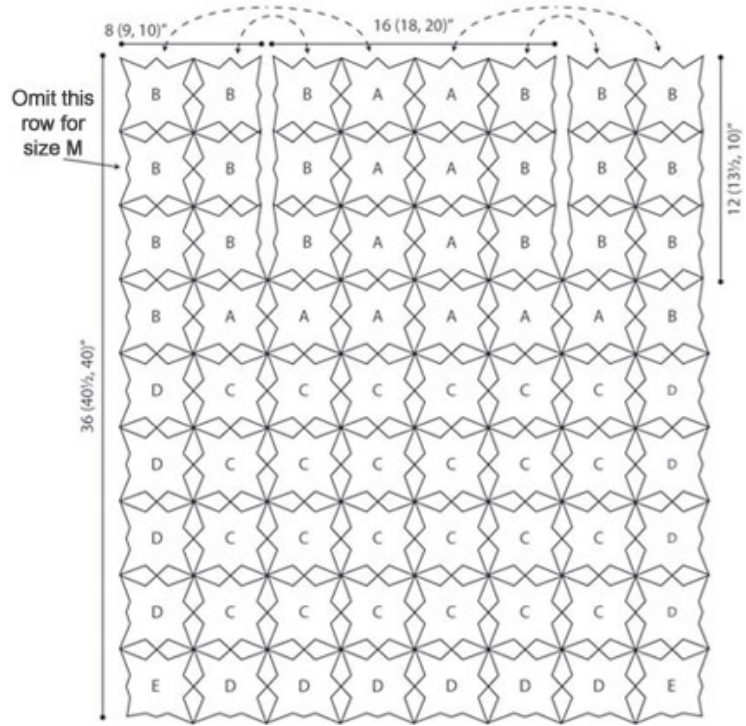
Fasten off. Sew one tie to each side of front between 4th and 5th motifs.

FINISHING

Using yarn needle, weave in all ends. If desired, steam lightly to set stitches.

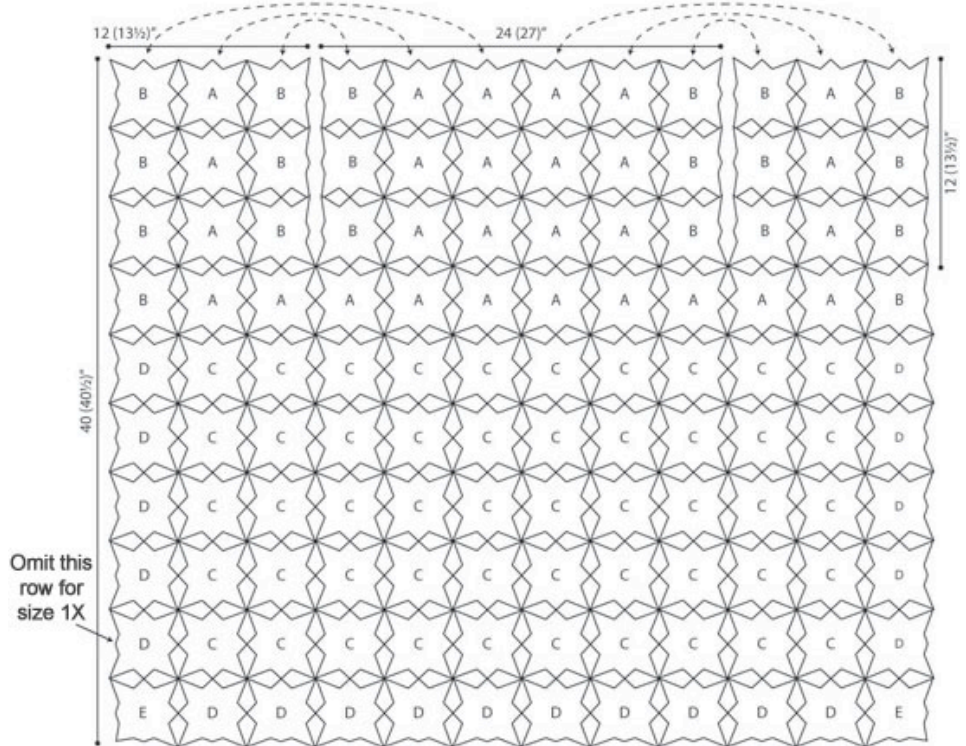
Sizes XS (S, M)

Note: Also join top rows of vest for shoulders.



Sizes L (1X)

Note: Also join top rows of vest for shoulders.



[Visit Bond America online](http://www.naturallycaron.com)

[Visit Caron International online](http://www.naturallycaron.com)

CARON

©2009 Caron International