



Subscribe to Caron Connections, our free eNewsletter

Enter your e-mail address

subscribe

The Yarn. The Web. The Experience.

Home

Yarns

Pattern Boutique

Designer Studio

Guide to Style

Cari's Blog

Where to Buy

Eugene Throw

designed by
Nancy Smith



Technique used: Crochet



INTERMEDIATE

YARN

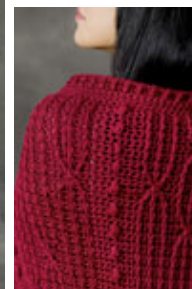
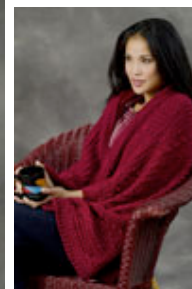
[shop online](#)

[Naturally Caron.com Country](#)

75% Microdenier acrylic, 25% Merino wool; 3
oz/100 g, 185 yds/170 m ball):
36 oz.

Shown in: #0017 Claret

One size US J-10 (6mm) crochet hook, or size to
obtain gauge.
Yarn needle



click to enlarge



[Printer Friendly instructions](#)

FINISHED MEASUREMENTS:

Throw measures approximately 40"/101.5 cm wide x 55"/139.5 cm long.

GAUGE

13 sc and 14 rows = 4"/10cm.

STITCHES USED

Chain (ch), single crochet (sc), slip stitch (sl st).

SPECIAL TERMS

FP-CI: Front-post cluster—Yarn over, insert hook from front to back and then to front again around post of stitch, yarn over and draw up loop, yarn over and draw through 2 loops on hook (2 loops on hook), [yarn over, insert hook from front to back and then to front again around post of *same* stitch, yarn over and draw up loop, yarn over and draw through 2 loops on hook] twice, yarn over and draw through all loops on hook, chain 1.

FPdc: Front-post double crochet—Yarn over, insert hook from front to back and then to front again around post of stitch,

yarn over and draw up loop, [yarn over and draw through 2 loops on hook] twice.

Cross-Over: Skip next 2 FPdc 2 rows below, FPdc around next FPdc 2 rows below; *working in front of the* FPdc just made, FPdc around 2nd skipped FPdc, FPdc around first skipped FPdc.

NOTES

1. When working FPdc, be sure to draw first loop up to height of working row, to avoid puckering the fabric.
2. The FPdc are worked around the post of FPdc 2 rows below the current row, except in Row 4 (where FPdc are worked around the post of sc in Row 2). Do not work into the single crochet stitches behind FPdc.
3. FP-CI are worked around the sc 3 rows below, in the row immediately above the previous FP-CI, except in Row 4 (where FP-CI are worked around the post of sc in Row 2). Do not work into the single crochet stitches behind FP-CI.

THROW

Ch 116.

Row 1 (RS): Work in back bumps of ch, sc in 2nd ch from hook, sc in each remaining ch across, turn—115 sc.

Rows 2 and 3: Ch 1, sc in each st across, turn.

Row 4: Ch 1, sc in first sc, *[FPdc around next sc 2 rows below, sc in next sc] 9 times, sc in next 2 sc, FP-CI around next sc 2 rows below, sc in next 3 sc; repeat from * 3 more times, [FPdc around next sc 2 rows below, sc in next sc] 9 times, turn—66 sc, 45 FPdc, and 4 FP-CI.

Rows 5 and all odd-numbered (WS) rows: Ch 1, sc in each st across, turn—115 sc.

Notes:

1. When working WS rows, work into the top of each FP-CI only, skip the ch-1's that are part of the FP-CI.
2. All odd-numbered rows (WS) are a repeat of Row 5. The following instructions are for the RS rows only.

Row 6: Ch 1, sc in first sc, *[FPdc around next FPdc 2 rows below, sc in next sc] 9 times, sc in next 6 sc; repeat from * 3 more times, [FPdc around next FPdc 2 rows below, sc in next sc] 9 times, turn.

Row 8: Ch 1, sc in first sc, *[FPdc around next FPdc 2 rows below, sc in next sc] 3 times, sc in next sc, FPdc around next 3 FPdc 2 rows below, sc in next 2 sc, [FPdc around next FPdc 2 rows below, sc in next sc] 3 times, sc in next 2 sc, FP-CI around next sc 3 rows below, sc in next 3 sc, [FPdc around next FPdc 2 rows below, sc in next sc] 9 times, sc in next 2 sc, FP-CI around next sc 3 rows below, sc in next 3 sc; repeat from * once more, [FPdc around next FPdc 2 rows below, sc in next sc] 3 times, sc in next sc, FPdc around next 3 FPdc 2 rows below, sc in next 2 sc, [FPdc around next FPdc 2 rows below, sc in next sc] 3 times.

Row 10: Ch 1, sc in first sc, [FPdc around next FPdc 2 rows below, sc in next sc] 3 times, sc in next sc, Cross-Over, sc in next 2 sc, [FPdc around next FPdc 2 rows below, sc in next sc] 3 times, *sc in next 6 sc, [FPdc around next FPdc 2 rows below, sc in next sc] 9 times, sc in next 6 sc, [FPdc around next FPdc 2 rows below, sc in next sc] 3 times, sc in next sc, Cross-Over, sc in next 2 sc, [FPdc around next FPdc 2 rows below, sc in next sc] 3 times; repeat from * once more, turn.

Row 12: Ch 1, sc in first sc, [FPdc around next FPdc 2 rows below, sc in next sc] 3 times, FPdc around first FPdc under Cross-Over, sc in next sc, FPdc around center FPdc of Cross-Over, sc in next sc, FPdc around 3rd FPdc of Cross-Over, sc in next sc, [FPdc around next FPdc 2 rows below, sc in next sc] 3 times, *sc in next 2 sc, FP-CI around next sc 3 rows below, sc in next 3 sc, [FPdc around next FPdc 2 rows below, sc in next sc] 9 times, sc in next 2 sc, FP-CI around next sc 3 rows below, sc in next 3 sc, [FPdc around next FPdc 2 rows below, sc in next sc] 3 times, FPdc around first FPdc under Cross-Over, sc in next sc, FPdc around center FPdc of Cross-Over, sc in next sc, FPdc around 3rd FPdc of Cross-Over, sc in next sc, [FPdc around next FPdc 2 rows below, sc in next sc] 3 times; repeat from * once more, turn.

Row 14: Repeat Row 6.

Row 16: Ch 1, sc in first 2 sc, *FPdc around next 3 FPdc 2 rows below, sc in next 2 sc, [FPdc around next FPdc 2 rows below, sc in next sc] 3 times, sc in next sc, FPdc around next 3 FPdc 2 rows below, sc in next 4 sc, FP-CI around next sc 3 rows below, sc in next 4 sc; repeat from * 3 more times, FPdc around next 3 FPdc 2 rows below, sc in next 2 sc, [FPdc around next FPdc 2 rows below, sc in next sc] 3 times, sc in next sc, FPdc around next 3 FPdc 2 rows below, sc in last 2 sc, turn.

Row 18: Ch 1, sc in first 2 sc, *Cross-Over, sc in next 2 sc, [FPdc around next FPdc 2 rows below, sc in next sc] 3 times, sc in next sc, Cross-Over, sc in next 9 sc; repeat from * 3 more times, Cross-Over, sc in next 2 sc, [FPdc around next FPdc 2 rows below, sc in next sc] 3 times, sc in next sc, Cross-Over, sc in last 2 sc, turn.

Row 20: Ch 1, sc in first sc, [FPdc around next FPdc 2 rows below, sc in next sc] 9 times, *sc in next 2 sc, FP-CI around next sc 3 rows below, sc in next 3 sc, [FPdc around next sc, sc in next sc] 9 times; repeat from * 3 more times, turn.

Rows 22, 24, 26, 28, and 30: Repeat Rows 6, 8, 10, 12, and 14.

Row 32: Ch 1, sc in first sc, [FPdc around next FPdc 2 rows below, sc in next sc] 9 times, *sc in next 2 sc, FP-CI around next sc 3 rows below, sc in next 3 sc, [FPdc around next FPdc 2 rows below, sc in next sc] 3 times, sc in next sc, FPdc around next 3 FPdc 2 rows below, sc in next 2 sc, [FPdc around next FPdc 2 rows below] 3 times, sc in next 2 sc, FP-CI around next sc 3 rows below, sc in next 3 sc, [FPdc around next FPdc 2 rows below, sc in next sc] 9 times; repeat from * once more, turn.

Row 34: Ch 1, sc in first sc, [FPdc around next FPdc 2 rows below, sc in next sc] 9 times, *sc in next 6 sc, [FPdc around next FPdc 2 rows below, sc in next sc] 3 times, sc in next sc, Cross-Over, sc in next 2 sc, [FPdc around next FPdc 2 rows below] 3 times, sc in next 6 sc, [FPdc around next FPdc 2 rows below, sc in next sc] 9 times; repeat from * once more, turn.

Row 36: Ch 1, sc in first sc, [FPdc around next FPdc 2 rows below, sc in next sc] 9 times, *sc in next 2 sc, FP-CI around next sc 3 rows below, sc in next 3 sc, [FPdc around next FPdc 2 rows below, sc in next sc] 3 times, sc in next sc, FPdc around next 3 FPdc 3 rows below, sc in next 2 sc, [FPdc around next FPdc 2 rows below, sc in next sc] 3 times, sc in next 2 sc, FP-CI around next sc 3 rows below, sc in next 3 sc, [FPdc around next FPdc 2 rows below, sc in next sc] 9 times; repeat from * once more, turn.

Rows 38, 40, 42, 44, and 46: Repeat Rows 14, 16, 18, 20, and 22.

Rows 48 and 50: Repeat Rows 32 and 34.

Row 52: Repeat Row 36.

Repeat Rows 5–52 two more times.

Repeat Rows 5–33 one more time. Do not fasten off.

EDGING

Round 1 (RS): Ch 1, 2 sc in corner, sc evenly spaced along all edges of throw, working 3 sc in each of 3 remaining corners, sc in same corner as beginning; join with sl st in first sc, turn.

Rounds 2-5: Ch 1, 2 sc in first sc, sc in each st around, working 3 sc in each of 3 remaining corners, sc in same st as beginning; join with sl st in first sc, turn. Do not turn at the end of Round 5.

Round 6 (RS): Ch 1, 2 sc in first sc, [FPdc around next sc 2 rounds below, sc in next sc] across to next corner 3-sc, *sc in first sc of corner 3-sc, 3 sc in center sc of corner 3-sc, sc in last sc of corner 3-sc, [FPdc around next sc 2 rounds below, sc in next sc] to next corner 3-sc; repeat from * around, sc in same st as beginning; join with sl st in first sc, do not turn.

Round 7 (RS): *Sc in corner sc, FPdc around sc directly below in Round 5, sc in same st as first sc (corner turn made), [sc in next sc, FPdc around next FPdc] across to next corner sc; repeat from * around; join with sl st in first sc. Fasten off.

FINISHING

Using yarn needle, weave in all ends.



CARON

©2010 Caron International