



Subscribe to Caron Connections, our free eNewsletter

Enter your e-mail address

subscribe

The Yarn. The Web. The Experience.

Home

Yarns

Pattern Boutique

Gallery

Guide to Style

Cari's Blog

Where to Buy

Felicita Ruana

designed by
Darlene Dale



Technique used: Knit



EASY

YARN

Naturally Caron.com Spa

(75% Microdenier Acrylic, 25% Bamboo):

5 oz

Shown in: #0006 Berry Frappe

ADDITIONAL MATERIALS

One pair size US 9 (5.50 mm), or size to obtain gauge

Stitch holder

One additional needle, (see below), to work 3-Needle Bind-Off

Yarn needle

For Ties – one of the following:

Bond America's Embellish-Knit® Automatic Spool Knitter – I-Cord

OR – Two size US 6 (4.0 mm) double point needles (dpn) – I-Cord

OR – One crochet hook, size US F-5 (3.75 mm) – crocheted chain



Click for audio fashion show



click images to enlarge

schematic

Printer Friendly instructions

SIZES Adult Medium/Large

Ruana measures approximately 11" (28) cm wide by 59" (150) cm long, after blocking.

Note: Lace fabric is very flexible; piece may be blocked to desired size, but bear in mind that piece may be narrower if blocked longer, shorter if blocked wider.

GAUGE

In Waves pattern, 16 sts and 18 rows = 4"/10cm

ABBREVIATIONS

k2tog (decrease): Knit 2 sts together through the front loops.

ssk (decrease): Slip, slip, knit – Slip 2 sts, one at a time KNITWISE to right-hand needle, return sts to left-hand needle in turned position and knit them together through the back loops.

yo (increase): With the yarn in the knit position, bring it to the front between the needles, [to the purl position], then carry it over the needle, ready to knit the next stitch.

SPECIAL TECHNIQUES

3-Needle Bind Off (optional) (Joining 2 pieces together as you bind off.)

Place the stitches of the pieces to be joined on separate needles, (or each end of a circular needle), held one behind the other with right-sides facing each other, in left hand; with a third needle, (the same size or 1 size larger than used for knitting the pieces), k2tog [1 from the front needle, 1 from the back needle—1 stitch on right-hand needle], * K2tog [2 stitches on right-hand needle], bind off 1 stitch in usual manner; repeat from * to end.

I-Cord (optional): May be worked using either method below:

Using Embellish-Knit ®: Follow manufacturer's instructions.

Using double pointed needles: On a double pointed needle, cast on 3 sts; do *NOT* turn. * Slide sts to the opposite end of the needle and knit them, pulling yarn *firmly* behind sts; repeat from * to desired length. After a few rows, you will see that you are knitting a tiny tube; give it a gentle tug now and then to adjust any loose sts. Bind off all sts, leaving a 12" tail for finishing.

Crochet Chain (optional): Begin by making a slip knot on your hook. * Wrap the yarn around the hook (yarn over) and pull up a loop by drawing the yarn through the loop on the hook to form the chain; repeat from * for length desired.

STITCHES USED

WAVES PATTERN (multiple of 12 sts + 1) – also see Chart

Row 1 (RS): Knit.

Row 2 and all WS rows: Purl.

Rows 3, 5, 7, 9 and 11: K1, * [k2tog] 2 times, [yo, k1] 3 times, yo, [ssk] 2 times, k1; repeat from * across.

Row 12: Purl

Repeat Rows 1 – 12 for Waves patt.

NOTES

Ruana is knit in 2 rectangles, then joined at center Back.

Stitches of each piece may be placed on holders and joined using 3-Needle Bind Off (see Special Techniques), or may be bound off and sewn together at center Back.

Ties may be worked as I-Cord or as crochet chains (see Special Techniques).

RECTANGLES (make 2)

Using larger needles, cast on 49 sts.

(WS) Knit 1 row.

(RS) Begin Waves patt; work even until piece measures approximately 29" from cast on edge, end with (WS) Row 12 of patt.

First Rectangle: Place sts on holder (for 3-Needle Bind Off), or bind off all sts very loosely.

Second Rectangle: Leave sts on needle and place sts from first Rectangle on second needle (for 3-Needle Bind Off), or bind off all sts very loosely.

FINISHING**Assembly**

Join pieces using 3-Needle Bind Off or yarn needle. **Note:** Join loosely, to keep the seam from puckering.

Steam lightly, or wet-block to the finished measurements.

Using yarn needle, weave in ends.

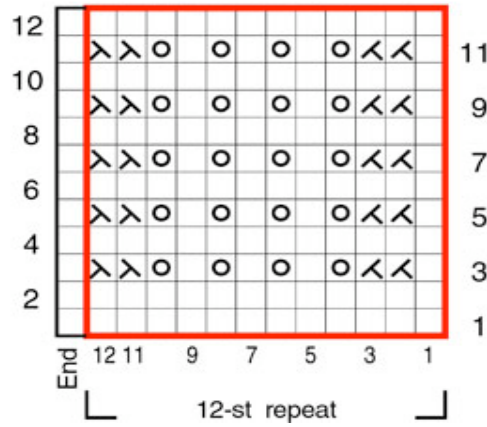
TIES (make 2)

Using method of choice (see Notes), work 2 pieces, each 14" long.

Fasten off, leaving a tail for attaching to Ruana.

Using yarn needle and tail, attach ties to center Front, approximately 12" up from lower edge on each side (see photo).

WAVES PATTERN



KEY

- Knit on RS, purl on WS
- Yo
- K2tog
- Ssk

[Visit Bond America online](#)

[Visit Caron International online](#)

CARON
©2008 Caron International