



Subscribe to Caron Connections, our free eNewsletter

Enter your e-mail address

subscribe

The Yarn. The Web. The Experience.

Home

Yarns

Pattern Boutique

Gallery

Guide to Style

Cari's Blog

Where to Buy

Glasgow Jacket

designed by
Kathy Perry



Technique used: Knit



EASY

YARN

Naturally Caron.com Country

(75% Microdenier acrylic, 25% Merino wool; 3 oz/85 g, 185 yds/169 m ball): 9 (9, 10, 10, 11, 11) balls MC, 1 ball each A, B, C and D

Shown in:

#0013 Spruce (MC), #0024 Black (A), #0023 Chocolate Truffle (B), #0008 Silver Service (C), #0014 Deep Purple (D)

One pair size US 8 (5 mm) needles, or size to obtain gauge

One size US 8 (5 mm), 24"/61 cm circular needle for Collar

One size US 10 (6 mm), 24"/61 cm circular needle for Seed stitch on Collar only

Row markers

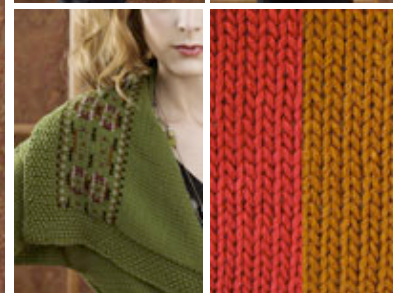
Large stitch holders (2)

Yarn needle

Row counter



click for audio fashion show



click to enlarge

schematic | chart



Printer Friendly instructions

SIZES: Small (Medium, Large, XLarge, XXXLarge)

KNITTED MEASUREMENTS

Bust: 38 (42, 46, 50, 54, 58)"/96.5 (106.5, 117, 127, 137, 147.5) cm

Length: 23 (23 1/2, 24, 24 1/2, 25, 25 1/2)/58.5 (59.5, 61, 62, 63.5, 65) cm

GAUGE

In Stockinette stitch using #8 needles and MC, 18 sts and 24 rows = 4"/10 cm

In Seed stitch using #8 needles and MC, 18 sts and 24 rows = 4"/10 cm

STITCHES USED

Stockinette stitch (St st)

Seed stitch

Fair Isle (see chart)

Seed Stitch (even number of sts)

Row 1 (RS): *K1, p1; repeat from * to end.

Rows 2: *P1, k1; repeat from * to end.

Repeat Rows 1 & 2 for Seed st.

BACK

Using size 8 straight needles and MC, cast on 88 (98, 106, 116, 124, 134) sts. Work in Seed st for 2".

Change to St st and work even until piece measures 14" from beg. Place markers each end of last row for armholes. Work even until armholes measures 9 (9 ½, 10, 10 ½, 11, 11 ½)" above markers, end with a WS row.

Shape Shoulders

Bind off 25 (28, 32, 35, 39, 41) sts beg next 2 rows. Bind off rem 38 (42, 42, 46, 46, 52) sts for Back neck.

RIGHT FRONT

Using size 8 straight needles and MC, cast on 68 (74, 78, 82, 86, 92) sts. Work in Seed st for 2".

Change to St st however keeping 10 front edge sts in Seed st. Work until piece measures 14" from beg, end with a WS row. Place marker for armhole as for Back. Work even until armhole measures 2 ¾ (3 ¼, 4, 4 ¼, 4 ¾, 4 ¾)" above mark, end with a WS row.

Shape Neck

(RS): Work 32 (33, 33, 32, 32, 33) sts and place on a holder, work to end of row. Dec 1 st at neck edge every row 5 (6, 6, 7, 7, 9) times, then every other row 6 (7, 7, 8, 8, 9) times - 25 (28, 32, 35, 39, 41) sts. Work until armhole measures same as Back to shoulder.

Shape Shoulder

Bind off rem sts.

LEFT FRONT

Work as for Right Front with reverse shaping.

SLEEVES

Using size 8 straight needles and MC, cast on 44 (44, 46, 46, 48, 48) sts. Work in Seed st for 2".

Change to St st and inc 1 st each side every 4 (4, 4, 3, 3, 3) rows 1 (16, 26, 3, 7, 11) time(s), then every 5 (5, 0, 4, 4, 4) rows 20 (8, 0, 24, 21, 18) times -- 86 (92, 98, 100, 104, 106) sts. Work even until Sleeve measures 20" from beg, end with a WS row. Bind off.

Sew shoulder seams.

COLLAR (worked in one piece)

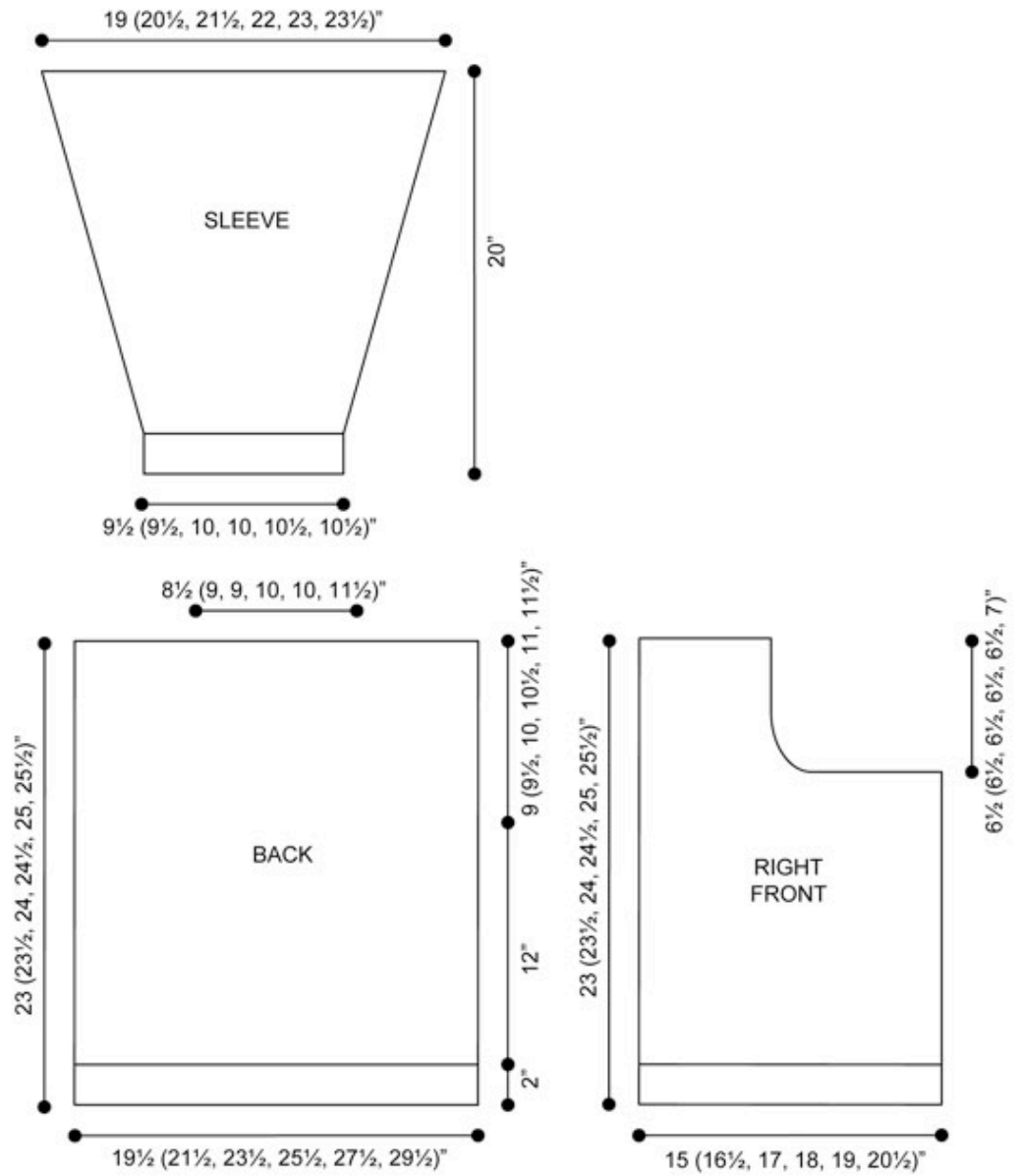
With WS facing, using size 8 circular needle and MC, pick up and k32 (33, 33, 32, 32, 33) sts from Left Front holder, 34 (35, 35, 36, 36, 39) sts from Left Front neck edge, 38 (42, 42, 46, 46, 52) sts from Back neck, 34 (35, 35, 36, 36, 39) sts from Right Front neck edge and 32 (33, 33, 32, 32, 33) sts from Right Front holder -- 170 (178, 178, 182, 182, 196) sts. Work in St st keeping 10 sts on each front edge in Seed st. Work until piece measures 6". Follow Fair Isle chart centering pat. When chart is complete, work 1 row St st. Change to size 10 circular needle and work 2" Seed st. Bind off loosely.

FINISHING

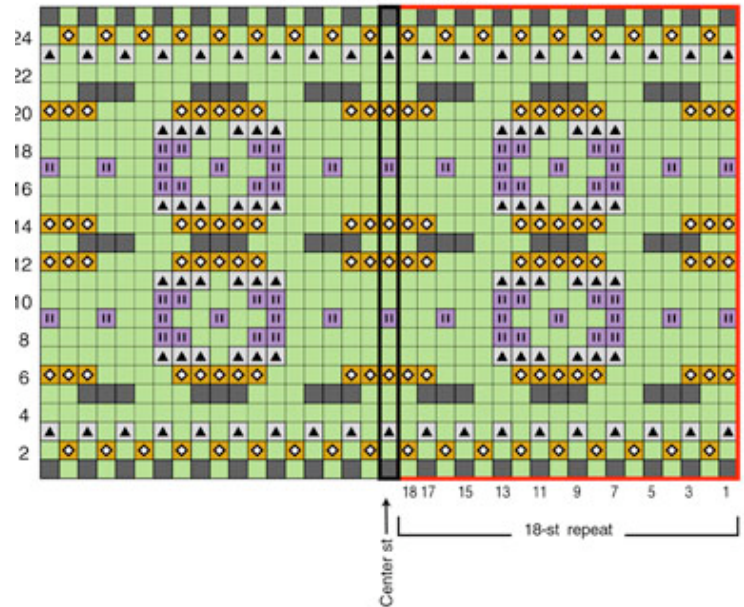
Sew Sleeves in place between markers. Sew side seams.

Block lightly to measurements.

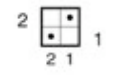
Using yarn needle, weave in ends.



FAIR ISLE CHART Work in St st throughout



Seed Stitch



KEY

- Knit on RS, purl on WS
- ◼ Purl on RS, knit on WS
- Main Color
- A
- B
- ▲ C
- ▯ D

[Visit Bond America online](#)

[Visit Caron International online](#)

CARON

©2008 Caron International