



Subscribe to Caron Connections, our free eNewsletter

Enter your e-mail address

subscribe

*The Yarn. The Web. The Experience.*

Home

Yarns

Pattern Boutique

Designer Studio

Guide to Style

Cari's Blog

Where to Buy

## Saginaw Hooded Coat

designed by  
Deborah Newton



Technique used: Knit



YARN

[shop online](#)

[Naturally Caron.com Country](#)

(75% Microdenier Acrylic/25% Merino Wool  
3 oz/85 g, 185 yds/169 m skein):

Color #7 Claret (A), 27 (30, 33, 33) oz/765 (850,  
936, 936) gr;

Color #24 Black (B), 3 (3, 3, 6) oz/85 (85, 85, 170)  
gr;

Color #14 Deep Purple (C), 3 oz/85 gr; Color #21  
Peacock (D), 3 oz/85 gr;

Color #12 Foliage (E), 3 oz/85 gr;

Color #11 Gilded Age (F), 3 oz/85 gr

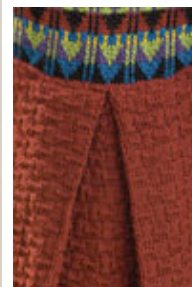
One pair US size 8 (5mm) needles

One pair each US sizes 9 (5.5mm) and 10 (6mm)  
needles, or size to obtain gauge

Stitch markers

Yarn needle

4 buttons, 1 1/4" diameter



click to enlarge

[schematics](#) | [chart](#)



[Printer Friendly instructions](#)

**SIZES:** Small (Medium, Large, X-Large)

### KNITTED MEASUREMENTS

Bust 38 (42, 46, 50)"

Length 30 1/4 (30 3/4, 31 1/4, 31 3/4)"

### GAUGE

In Textured pattern A or B, using size 9 (5.5mm) needles, 19 sts and 26 rows = 4"/10 cm

In Colorwork pattern, using size 10 (6mm) needles, 22 sts and 22 rows = 4"/10 cm

### STITCHES USED

Stockinette stitch (St st)

Textured Pattern A (multiple of 8 sts)

**Row 1 (RS):** Knit.

**Row 2:** \*K4, p4; repeat from \*.

**Row 3:** \*K4, p4; repeat from \*.

**Row 4:** Knit.

**Row 5:** Repeat Row 3.

**Row 6:** Repeat Row 2.

**Row 7:** Knit.

**Row 8:** \*P4, k4; repeat from \*.

**Row 9:** \*P4, k4; repeat from \*.

**Row 10:** Knit.

**Row 11:** Repeat Row 9.

**Row 12:** Repeat Row 8.

Repeat Rows 1-12 for Textured pat A.

Textured Pattern B (multiple of 8 sts plus 4)

**Row 1 (RS):** Knit.

**Row 2:** \*K4, p4; repeat from \*, end k4.

**Row 3:** \*P4, k4; repeat from \*, end p4.

**Row 4:** Knit.

**Row 5:** Repeat Row 3.

**Row 6:** Repeat Row 2.

**Row 7:** Knit.

**Row 8:** \*P4, k4; repeat from \*, end p4.

**Row 9:** \*K4, p4; repeat from \*, end k4.

**Row 10:** Knit.

**Row 11:** Repeat Row 9.

**Row 12:** Repeat Row 8.

Repeat Rows 1-12 for Textured pat B.

#### LOWER TRIM

Using size 8 needles and color B, cast on designated amount of sts and k 1 row. Do not cut yarn, but carry color B up at beg of RS rows to be used again. Knit 2 rows each of colors C, A (carry up A), D and B. Cut color B and cont with A.

#### NOTES

For color pattern, see chart and key attached. Begin and end where indicated; read all odd numbered RS rows from right to left and all even-numbered WS rows from left to right.

Work all edge sts in St st.

Fronts must be worked first to est rows for making pleat on Back.

#### LEFT FRONT

**Lower trim:** Using size 8 needles and color B, cast on 47 (51, 55, 59) sts. Work lower trim pat, inc 4 sts evenly on last WS row – 51 (55, 59, 63) sts. Change to size 9 needles and color A.

**Next row (RS):** K2 (side edge sts), work Row 1 of Textured pat A (B, A, B) over next 48 (52, 56, 60) sts, end k1 (front edge st).

Work even in pat as est until piece measures 5" from beg, ending with a WS row.

#### Shape side edge

**Dec row (RS):** K1, ssk, work as est to end.

Repeat side dec every 14th row 5 times more – 45 (49, 53, 57) sts.

Work even in pat as est until piece measures 18¼" from beg, inc 9 sts evenly on last WS row – 54 (58, 62, 66) sts.

#### Colorwork yoke

Change to size 10 needles.

**Next row (RS):** Begin and end Row 1 of chart where indicated for your size (no edge sts in yoke section). Work even until yoke measures 6", ending with a WS row.

**Shape Raglan**

Keeping in pat, bind off 6 sts at beg of next RS row, then 2 sts at beg of next 14 (16, 17, 19) RS rows. Bind off remaining 20 (20, 22, 22) sts.

**RIGHT FRONT**

Work as for Left Front, reversing all shaping and placement of edge sts.

**BACK**

**Lower trim:** Using size 8 needles and color B, cast on 153 (161, 169, 177) sts. K 1 row. Change to color C.

Est pleats (RS): K46 (50, 54, 58), sl 1 wyib, k14, p1, k center 29 sts, p1 st, k14, sl 1 wyib, k46 (50, 54, 58).

**Next row (WS):** K46 (50, 54, 58), p1, k14, sl 1 wyib, k center 29 sts, sl 1 wyib, k14, p1, k46 (50, 54, 58).

Cont lower trim in color sequence as described, purling all slipped sts of previous row and slipping all purled sts of previous row, end with the last RS color B row.

**Inc row (WS):** K46 (50, 54, 58) inc 4 sts evenly in this section, p1, k14 inc 2 sts evenly in this section, sl 1, k center 29 sts inc 3 sts evenly in this section, sl 1, k14 inc 2 sts evenly in this section, p1, k46 (50, 54, 58) inc 4 sts evenly in this section – 168 (176, 184, 192) sts.

Change to size 9 needle and color A.

**Next row (RS):** K2 (edge sts), work Row 1 of Textured pat A (B, A, B) over next 48 (52, 56, 60) sts, sl 1 st wyib, work Row 1 of Textured pat A over next 16 sts, p1, work Row 1 of Textured pat A over center 32 sts, p1, work Row 1 of Textured pat A over next 16 sts, sl 1 st wyib, work Row 1 of Textured pat A (B, A, B) over next 48 (52, 56, 60) sts, end k2 (edge sts).

Work even in pat as est until piece measures 5" from beg, ending with a WS.

**Shape side edge**

**Dec row (RS):** K1, ssk, work as est to last 3 sts, end k2tog, k1.

Repeat side decs every 14th row 5 times more – 156 (164, 172, 180) sts.

Work even in pat as st until piece measures approx 18" from beg or 2 rows less than for Fronts to beg of colorwork section, ending with a WS row.

**Close Pleats (RS):** K2 (edge sts), keeping in pat work 25 (29, 33, 37) sts, sl next 17 sts to first dpn, sl next 17 sts to second dpn, then sl next 17 sts to third dpn; allow pleat to fold and lay the 3 dpns on top of each other; then with RH needle, work in pat working 3 sts tog at the same time (1 st from each needle) over the next 17 sts; sl next 17 sts to first dpn, sl next 17 to second dpn, then sl next 17 sts to third dpn; allow pleat to fold and lay the 3 dpns on top of each other; then with RH needle, work in pat working 3 sts tog at the same time (1 st from each needle) over the next 17 st; work 25 (29, 33, 37) sts, k2 (edge sts) – 88 (96, 104, 112) sts.

(WS) Work in pat, inc 17 (21, 23, 25) sts evenly spaced – 105 (117, 127, 137) sts.

**Colorwork yoke**

Change to size 10 needles.

**Next row (RS):** Beg and end Row 1 of chart where indicated for your size (no edge sts in yoke section). Work even until yoke measures 6", end with a WS row.

**Shape Raglan**

Keeping in pat, bind off 6 sts at beg of next 2 rows, 2 sts at beg of next 32 (26, 32, 28) rows, then 3 sts at beg of next 0 (8, 6, 12) rows – 29 (29, 33, 33) sts. Bind off.

**LEFT SLEEVE**

**Lower trim:** Using size 8 needles and color B, cast on 70 (74, 78, 82) sts. Work lower trim pat, inc 6 sts evenly on last WS row – 76 (80, 84, 88) sts.

Change to size 9 needle and color A.

**Next row (RS):** K2 (edge sts), work Row 1 of Textured pat A (B, A, B) over center 72 (76, 80, 84) sts, end k2 (edge sts).

Work even in pat as est until sleeve measures 15" from beg, ending with a WS row.

**Shape Raglan Cap**

Bind off 6 sts at beg of next 2 rows, then 2 sts at beg of next 2 rows.

**Dec row (RS):** K1, ssk, work as est to last 4 sts, end k2tog, k1.

**Next row (WS):** P2, work in pat to last 2 sts, end p2.

Repeat last 2 rows 14 (16, 18, 20) more times, ending with WS row -- 30 sts.\*\*

Working dec at beg of next 2 RS rows as est, bind off 9 sts at beg of next 2 WS rows, then 10 sts on last WS row.

**RIGHT SLEEVE**

Work same as for Left Sleeve until 30 sts, ending at \*\*.

Working dec at end of next 2 RS rows at est, bind off 9 sts at beg of next 2 WS rows, then 10 sts on last WS row.

**HOOD**

With size 9 needles and color A, cast on 42 (42, 46, 46) sts.

**Next row (RS):** K1 (edge st), work Row 1 of Textured pat A (A, B, B) over center 40 (40, 44, 44) sts, end k1 (edge st).

Work even in pat as est until piece measures 11½", ending with a RS row.

**Side extensions:** Keeping 1 edge st each side and working all sts in pat to match center sts, cast on 56 sts at beg of next 2 rows – 152 (152, 156, 156) sts. Work even until this side extension measures 6½ (7, 7 ½, 8)", ending with a WS row.

With color B, knit RS row and dec 15 sts evenly spaced, then work lower trim. Bind off.

**FINISHING**

**Note:** DO NOT STEAM THIS FABRIC AT ALL!

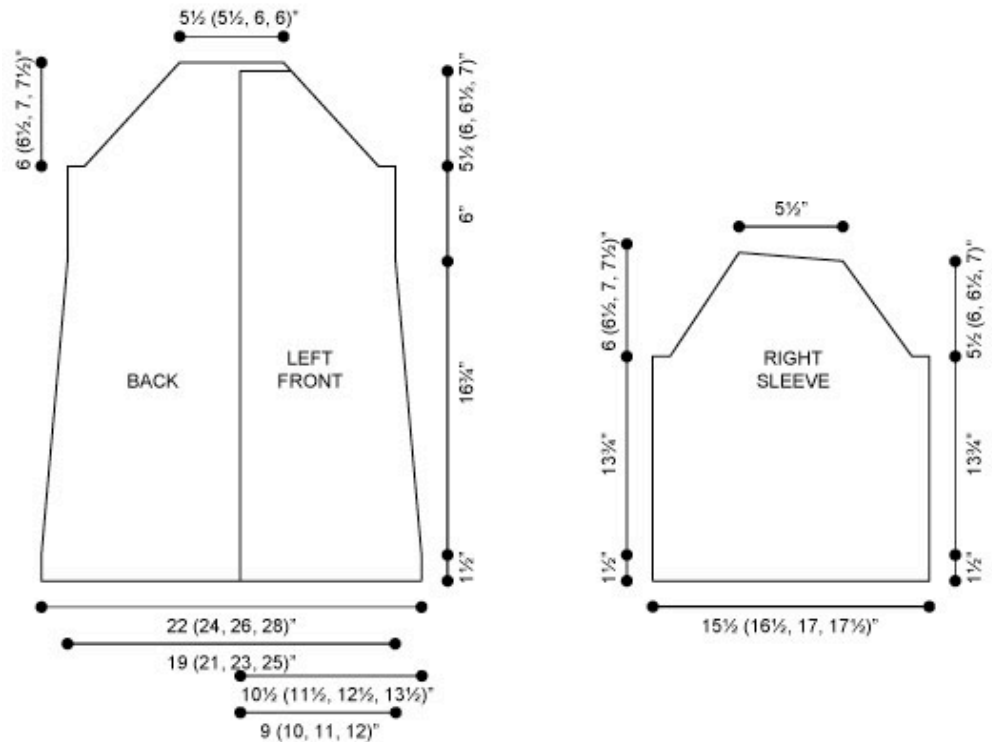
Sew fronts to back along raglans. Sew sleeve and side seams. Sew sides of the first section of hood to edges of hood extensions. Sew hood edge along neckline edge of coat, easing in any fullness, and allow trim to extend beyond textured fabric.

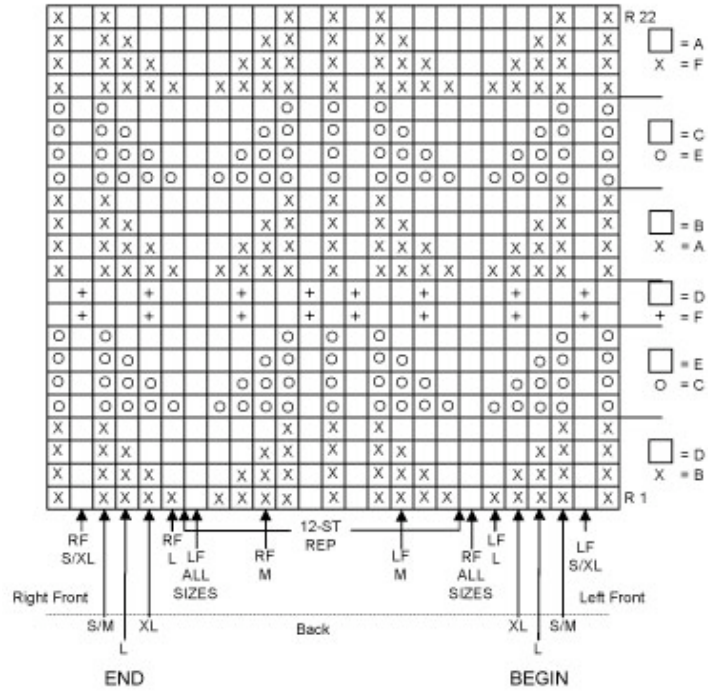
**Left Front trim:** With RS facing, color B and size 8 needles, beginning at upper left front edge, pick up 128 (131, 134, 137) sts evenly along left front to lower edge. Work trim, then BO. Sew on buttons, with first one ¼" from top and the others approx 4" apart.

**Right Front trim:** Work as for left front trim; at the same time, after first RS color C row is complete, work four 5-st buttonholes opposite buttons on left front.

Join front trims to hood trim.

Using yarn needle, weave in ends.





[Visit Bond America online](http://www.bondamerica.com)

[Visit Caron International online](http://www.caroninternational.com)

# CARON

©2009 Caron International