



Subscribe to Caron Connections, our free eNewsletter

Enter your e-mail address

subscribe

*The Yarn. The Web. The Experience.*

Home

Yarns

Pattern Boutique

Designer Studio

Guide to Style

Cari's Blog

Where to Buy

## St. Petersburg Coat

designed by  
Kim Guzman



Technique used: Crochet



INTERMEDIATE  
YARN

[shop online](#)

[Naturally Caron.com Country](#)

(75% Microdenier Acrylic/25% Merino Wool):

28 (33, 38) oz (A), 17 (20, 23) oz (B),

17 (20, 23) oz (C)

**Shown in:** #0019 Vicuna (A); #0023 Chocolate Truffle (B); #0024 Black (C)

One size US N-13 (9mm) crochet hook, or size to obtain gauge.

One size US G-6 (4mm) crochet hook, or size to obtain gauge.

Stitch markers—2 split ring  
Yarn needle



click to enlarge

[stitch chart](#) | [schematics](#)

[Printer Friendly instructions](#)

### SIZES

S (M, L)

### FINISHED MEASUREMENTS

**To Fit Bust:** 32-34 (36-38, 40-42)" / 81.5-86.5 (91.5-96.5, 101.5-106.5) cm

**Note:** This garment has a deep V-neck that begins below the waist. Accordingly, the bust measurements provided are "to fit". This means that the garment should comfortably fit the indicated bust sizes.

**Length:** 34 (35, 36 1/2)" / 86.5 (90, 92.5) cm

**Note:** Coat may lengthen 4-6"/10-15cm when worn.

### GAUGE

In stitch pattern with 3 strands of yarn held together and using larger hook, 9 sts and 8 rows = 4"/10 cm.

### STITCHES USED

Chain (ch), reverse single crochet (rev sc), single crochet (sc), slip stitch (slip st).

### SPECIAL TERM

**sc2tog:** Single crochet 2 together – Insert hook in next stitch, yarn over and pull up a loop, (2 loops on hook), insert hook in next stitch, yarn over and pull up a loop, yarn over and draw through all 3 loops on hook.

### NOTES

1. Body of garment is worked in one piece from lower edge up to armholes. The piece is then divided into three sections for fronts and back.
2. Sleeves are worked separately.
3. Three strands of yarn, one each of A, B, and C, are held together throughout body and sleeves of garment. Two strands of yarn, both in A, are held together for the collar.
4. The garment fabric is reversible. It is not necessary to assign a right side (RS) or wrong side (WS) until the collar is worked.

### HELPFUL

If the last stitch of a row seems a little unstable, try working the last single crochet through both loops on the last stitch of each row.

### BODY

With one strand each of A, B, and C held together and larger hook, ch 91 (101, 109).

**Row 1:** Working in back bumps of ch only, sc in 2nd ch from hook and in each rem ch across, turn—90 (100, 108) sc.

**Note:** Working in the back bumps of the foundation ch creates a nicer edge.

**Row 2:** Ch 1, \*sc in front loop of next sc, sc in back loop of next sc; repeat from \* across, turn.

**Row 3:** Ch 1, \*sc in back loop of next sc, sc in front loop of next sc; repeat from \* across, turn.

**Rows 4–35 (27, 19):** Repeat last 2 rows 16 (12, 8) more times.

**Note:** Notice that the front loop sc are stacked on top of front loop sc, and the back loop sc are stacked on top of back loop sc. It is important that you are able "read" your stitches, so that you will be able to maintain this pattern after the body is divided for fronts and back.

### Shape Sides

**Row 1 (decrease):** Ch 1, sc2tog, \*sc in front loop of next sc, sc in back loop of next sc; repeat from \* across to last 2 sts, sc2tog, turn—88 (98, 106) sc.

**Row 2:** Ch 1, \*sc in front loop of next sc, sc in back loop of next sc; repeat from \* across, turn.

**Row 3:** Ch 1, \*sc in back loop of next sc, sc in front loop of next sc; repeat from \* across, turn.

**Row 4:** Repeat Row 2.

**Row 5 (decrease):** Ch 1, sc2tog, \*sc in back loop of next sc, sc in front loop of next sc; repeat from \* across to last 2 sts, sc2tog, turn—86 (96, 104) sc.

**Row 6:** Ch 1, \*sc in back loop of next sc, sc in front loop of next sc; repeat from \* across, turn.

**Row 7:** Ch 1, \*sc in front loop of next sc, sc in back loop of next sc; repeat from \* across, turn.

**Row 8:** Repeat Row 6.

**Rows 9–16 (24, 32)** Repeat Rows 1–8 of shaping 1 (2, 3) times—82 (88, 92) sc.

**Rows 17 (25, 33)–20 (28, 36):** Repeat Rows 1–4 of shaping once more—80 (86, 90) sc.

### Size L only:

**Row 37:** Ch 1, \*sc in back loop of next sc, sc in front loop of next sc; repeat from \* across, turn.

**Note:** You should have a total of 55 (56, 56) rows.

### Divide for Fronts and Back (All sizes)

#### First Front

**Row 1:** Ch 1, sc2tog, work in established pattern (front loop sc into front loop sts and back loop sc in to back loop sts) over next 12 (13, 14) sts, sc2tog, turn; leave remaining sts unworked (for armholes, back and second front)—14 (15, 16) sc.

#### Shape Armhole

**Row 2 (decrease):** Ch 1, sc2tog, work in established pattern (front loop sc into front loop sts and back loop sc into back loop sts) across, turn—13 (14, 15) sc.

**Row 3 (decrease):** Ch 1, work in established pattern (front loop sc into front loop sts and back loop sc into back loop sts) across to last 2 sts, sc2tog, turn—12 (13, 14) sc.

**Row 4:** Repeat Row 2—11 (12, 13) sc.

#### Shape Armhole and Front Edge

**Row 5 (decrease):** Ch 1, sc2tog, work in established pattern across to last 2 sts, sc2tog, turn—9 (10, 11) sc.

**Rows 6–8:** Ch 1, work in established pattern across, turn.

**Row 9:** Rep Row 2—8 (9, 10) sc.

**Rows 10–13 (14, 17):** Repeat Rows 6–9, 1 (1, 2) time(s), then repeat Row 6, 0 (1, 0) more time(s)—7 (8, 8) sc.  
Fasten off.

**Note:** You should have a total of 68 (70, 73) rows.

#### Back

**Note:** Continue working with 1 strand each of A, B, and C held together throughout.

Skip 6 unworked sts following first front, join yarn with sl st in next sc.

**Row 1:** Beginning in same sc as join, sc2tog, work in established pattern over next 32 (36, 38) sc, sc2tog, turn; leave remaining sts unworked (for armhole and second front)—34 (38, 40) sc.

**Rows 2–3 (4, 4) (decrease):** Ch 1, sc2tog, work in established pattern across to last 2 sts, sc2tog, turn—30 (32, 34) sc.

**Rows 5–11 (12, 15):** Ch 1, work in established pattern across, turn.

**Note:** You should have a total of 66 (68, 71) rows.

#### Shape First Shoulder

**Row 12 (13, 16):** Ch 1, work in established pattern over first 7 (8, 8) sc, turn; leave remaining sts unworked (for neck and second shoulder)—7 (8, 8) sc.

**Row 13 (14, 17):** Ch 1, work in established pattern across.

Fasten off.

#### Shape Second Shoulder

Skip 16 (16, 18) unworked sc following first shoulder, join yarn with sl st in next sc.

**Row 1:** Beginning in same sc as join, work in established pattern across, turn—7 (8, 8) sc.

**Row 2:** Ch 1, work in established pattern across.

Fasten off.

#### Second Front

Skip 6 unworked sts following back, join yarn with sl st in next sc.

**Row 1:** Beginning in same sc as join, sc2tog, work in established pattern over next 12 (13, 14) sc, sc2tog, turn—14 (15, 16) sc.

#### Shape Armhole

**Row 2 (decrease):** Ch 1, work in established pattern across to last 2 sts, sc2tog, turn—13 (14, 15) sc.

**Row 3 (decrease):** Ch 1, sc2tog, work in established pattern across, turn—12 (13, 14) sc.

**Row 4:** Repeat Row 2—11 (12, 13) sc.

#### Shape Armhole and Front Edge

**Row 5 (decrease):** Ch 1, sc2tog, work in established pattern across to last 2 sts, sc2tog, turn—9 (10, 11) sc.

**Rows 6–8:** Ch 1, work in established pattern across, turn.

**Row 9:** Rep Row 2—8 (9, 10) sc.

**Rows 10–13 (14, 17):** Repeat Rows 6–9, 1 (1, 2) time(s), then repeat Row 6, 0 (1, 0) more time(s)—7 (8, 8) sc.  
Fasten off.

**Note:** You should have a total of 68 (70, 73) rows.

#### SLEEVE (make 2)

With one strand each of A, B, and C held together and larger hook, ch 25 (27, 29).

**Row 1:** Working in back bumps of ch only, sc in 2nd ch from hook and in each rem ch across, turn—24 (26, 28) sc.

**Row 2:** Ch 1, \*sc in front loop of next sc, sc in back loop of next sc; repeat from \* across, turn.

**Row 3 (increase):** Ch 1, 2 sc in first sc, \*sc in front loop of next sc, sc in back loop of next sc; repeat from \* across to last sc, 2 sc in last sc, turn—26 (28, 30) sc.

**Row 4:** Ch 1, \*sc in back loop of next sc, sc in front loop of next sc; repeat from \* across, turn.

**Row 5:** Ch 1, \*sc in front loop of next sc, sc in back loop of next sc; repeat from \* across, turn.

**Row 6:** Ch 1, \*sc in back loop of next sc, sc in front loop of next sc; repeat from \* across, turn.

**Rows 7 and 8:** Repeat Rows 5 and 6.

**Row 9 (increase):** Ch 1, 2 sc in first sc, \*sc in back loop of next sc, sc in front loop of next sc; repeat from \* across to last

sc, 2 sc in last sc, turn—28 (30, 32) sc.

**Row 10:** Ch 1, \*sc in front loop of next sc, sc in back loop of next sc; repeat from \* across, turn.

**Row 11:** Ch 1, \*sc in back loop of next sc, sc in front loop of next sc; repeat from \* across, turn.

**Row 12:** Repeat Row 10.

**Rows 13 and 14:** Repeat Rows 11 and 12.

**Rows 15–26:** Repeat Rows 3–14—32 (34, 36) sc.

**Rows 27–33 (33, 34):** Repeat Rows 3–9 (9, 10)—36 (38, 40) sc.

#### Shape Cap

**Row 34 (34, 35):** Sl st across first 3 sc, ch 1, work in established pattern across to last 3 sc, turn; leave last 3 sc unworked—30 (32, 34) sc.

**Rows 35 (35, 36)–40 (41, 43):** Ch 1, sc2tog, work in established pattern across to last 2 sc, sc2tog, turn—18 (18, 18) sc. Fasten off.

#### FINISHING

**Note:** Due to the weight of the garment and the thickness of the fabric, the designer recommends joining seams with slip stitches, using the smaller hook and one strand of A.

Seam shoulders.

**Note:** For best results, before setting in the sleeves, hang the body of the garment for about 15 minutes.

Set in sleeves and seam sleeves.

#### COLLAR

Beginning at lower edge, count 28 (29, 31) rows and place a stitch marker on each front edge. Assign RS and WS of garment (e.g. assign RS to the best looking side of the fabric).

With WS facing, larger hook and 2 strands of A held together, join yarn with sl st in front edge at stitch marker.

**Row 1 (WS):** Ch 1, work 108 (110, 112) sc evenly spaced along front edge, back neck, and down opposite front edge to other stitch marker, turn—108 (110, 112) sc. Remove markers.

Place 2 stitch markers along back neck spaced about 4"/10cm apart. Move markers up as work progresses.

**Row 2 (RS):** Sl st across first 4 sc, ch 1, working in front loops only, [sc in each sc to increase marker, 2 sc in marked sc] twice, sc in each sc across last 4 sc, turn; leave remaining sts unworked—102 (104, 106) sc.

**Row 3 (WS):** Repeat Row 2, do not turn at end of row—96 (98, 100) sc.

**Row 4 (WS):** Ch 1, working in front loops only, rev sc in each sc across, do not turn.

**Row 5 (WS):** Ch 1, working in unworked back loops of previous row, sc in each sc across, turn.

**Rows 6 (RS) and 7 (WS):** Repeat Row 2 twice, do not turn at end of Row 7—84 (86, 88) sc.

**Rows 8–11:** Repeat Rows 4–7 two more times—72 (74, 76) sc.

**Rows 12–14:** Repeat Rows 4–6 once more—66 (68, 70) sc.

Fasten off.

With RS of collar facing, larger hook and 2 strands of A held together, join yarn with sl st in front edge just below end of first row of collar.

**Next Row:** Ch 1, working across outer edge of collar, sc evenly across working last sc in front edge just below beginning of first row of collar, do not turn.

**Next Row:** Ch 1, sk first sc, working in front loops only, rev sc across (do not skip last sc), do not turn.

**Next Row:** Ch 1, working in unworked back loops of previous row, sc2tog, sc in each sc across to last 2 sc, sc2tog, do not turn.

Repeat last 2 rows once more. Fasten off.

Weave in ends.

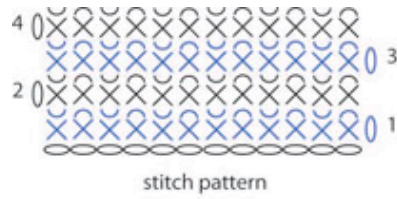
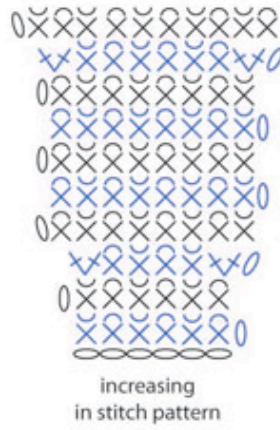
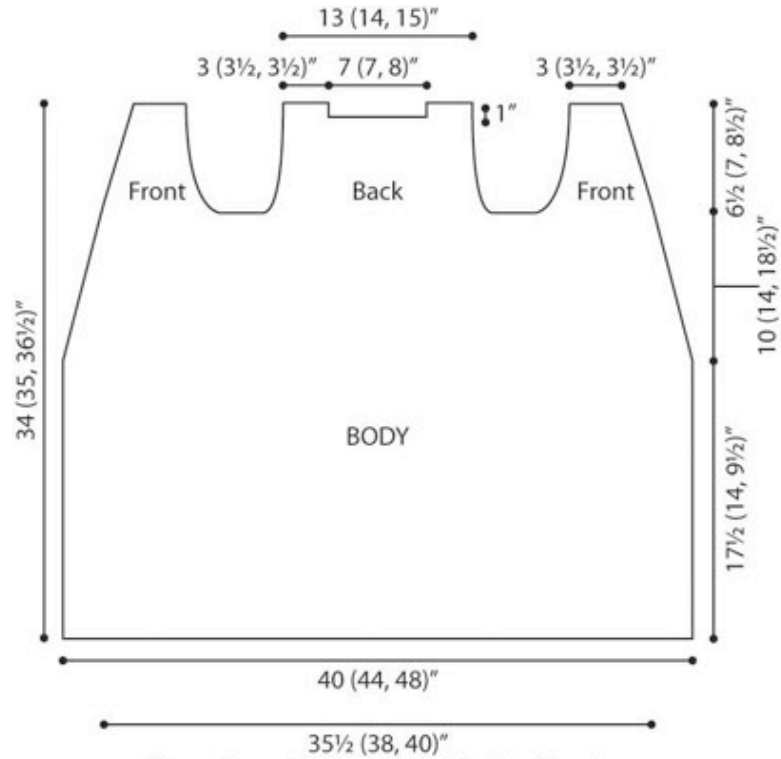


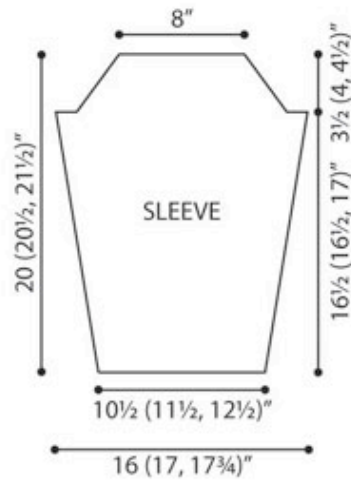
Diagram Key

- = chain (ch)
- × = single crochet (sc)
- ×× = 2 sc in same stitch (increase)
- ×× = sc2tog (decrease)
- ^ = worked in back loop only
- ∨ = worked in front loop only





(Due to the gradual decreasing of the deep V-neck, the garment measurement at bust height should not be mistaken for the actual bust measurement of the wearer)



[Visit Bond America online](http://www.naturallycaron.com)

[Visit Caron International online](http://www.naturallycaron.com)

**CARON**

©2009 Caron International