



Subscribe to Caron Connections,
our free eNewsletter

Enter your e-mail address

subscribe

The Yarn. The Web. The Experience.

[Home](#)

[Yarns](#)

[Pattern Boutique](#)

[Gallery](#)

[Guide to Style](#)

[Cari's Blog](#)

[Where to Buy](#)

Toronto Shawl Collar Pullover

designed by
Margret Willson



Technique used: Knit



INTERMEDIATE

YARN

Naturally Caron.com Country

(75% Microdenier acrylic, 25% Merino wool;
3 oz/85 g, 185 yds/169 m ball): 6 (7, 8, 8, 9)
balls MC, 1 ball each A, B and C

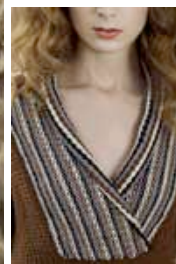
Shown in: #0023 Chocolate Truffle (MC),
#0007 Naturally (A), #0024 Black (B), #0008
Silver Service (C)

One pair size US 7 (4.5 mm), or size to
obtain gauge

One pair size US 6 (4 mm)

One circular size US 6 (4 mm), 24"/61cm
long

Stitch holder, Stitch markers, Yarn needle



[click to enlarge](#)

[schematic](#)

[Printer Friendly instructions](#)

SIZES: Small (Medium, Large, XLarge, XXXLarge)

KNITTED MEASUREMENTS

Bust 37 (41, 45, 49, 53)"/94 (104, 114, 124, 134) cm

Length 23 (23 ¼, 23 ½, 23 ¾, 24)"/58 (59, 60, 60, 61) cm

GAUGE

In Broken Rib using larger needles, 21 sts and 30 rows = 4"/10 cm

STITCHES USED

1x1 rib (multiple of 2 sts +1)

Row 1 (WS): K1, *p1, k1, repeat from * across.

Row 2: P1, *k1, p1, repeat from * across.

Repeat Rows 1 and 2 for 1x1 rib.

Broken Rib (multiple of 2 sts +1)

Row 1 (RS): Knit.

Row 2: P1, *k1, p1, repeat from * across.

Repeat Rows 1 and 2 for Broken Rib.

Collar Pattern (multiple of 2 sts +1)**Row 1 (WS):** Purl.**Row 2:** K1, *p1, k1, repeat from * across.**Row 3:** Purl.**Row 4:** K2, *p1, k1, repeat from * across to last 2 sts, end k2.

Rep Rows 1-4 changing colors on each RS row.

BACK

Using smaller needles and MC, cast on 97 (107, 117, 127, 137) sts.

(WS) Work in 1x1 rib until piece measures 2 ½" from beg, end with a WS row.

Change to larger needles and Broken Rib pat. Work even until piece measures 15 (14 ¾, 14 ½, 14 ¼, 14)" from beg, end with a WS row.

Shape Armholes

(RS) Bind off 6 (8, 10, 12, 14) sts at beg of next 2 rows -- 85 (91, 97, 103, 109) sts. Work even until armhole measures 7 ½ (8, 8 ½, 9, 9 ½)", end with a WS row. PM each side of center 31 (33, 35, 37, 39) sts for neck.

Shape Shoulders and Neck

Bind off 9 (9, 11, 11, 11) sts at beg of next 2 rows, then 9 (10, 10, 11, 12) sts at beg of next 4 rows. Place rem 31 (33, 35, 37, 39) sts on holder for Back neck.

FRONT

Work as for Back until piece measures 11 (11 ¼, 11 ½, 11 ¾, 12)" from beg, end with a WS row. PM each side of center 31 (33, 35, 37, 39) sts.

Shape Neck

(RS) Work to first marker, join a second ball of yarn and bind off center 31 (33, 35, 37, 39) sts for Front neck, work to end. Working both sides at same time, work even until piece measures same as Back to armhole shaping, end with a WS row.

Shape Armholes

Bind off 6 (8, 10, 12, 14) sts at beg of each armhole once – 27 (29, 31, 33, 35) sts. Work even until armhole measures 7 ½ (8, 8 ½, 9, 9 ½)", end with a WS row.

Shape Shoulders

Bind off 9 (9, 11, 11, 11) sts at each armhole edge once, then 9 (10, 10, 11, 12) sts twice.

SLEEVES

Using smaller needles and MC, cast on 51 sts.

(WS) Work in 1x1 rib until piece measures 3" from beg, end with WS row. Change to larger needles and Broken Rib pat. Work even for 4 rows, end with a WS row.

Shape Sleeve

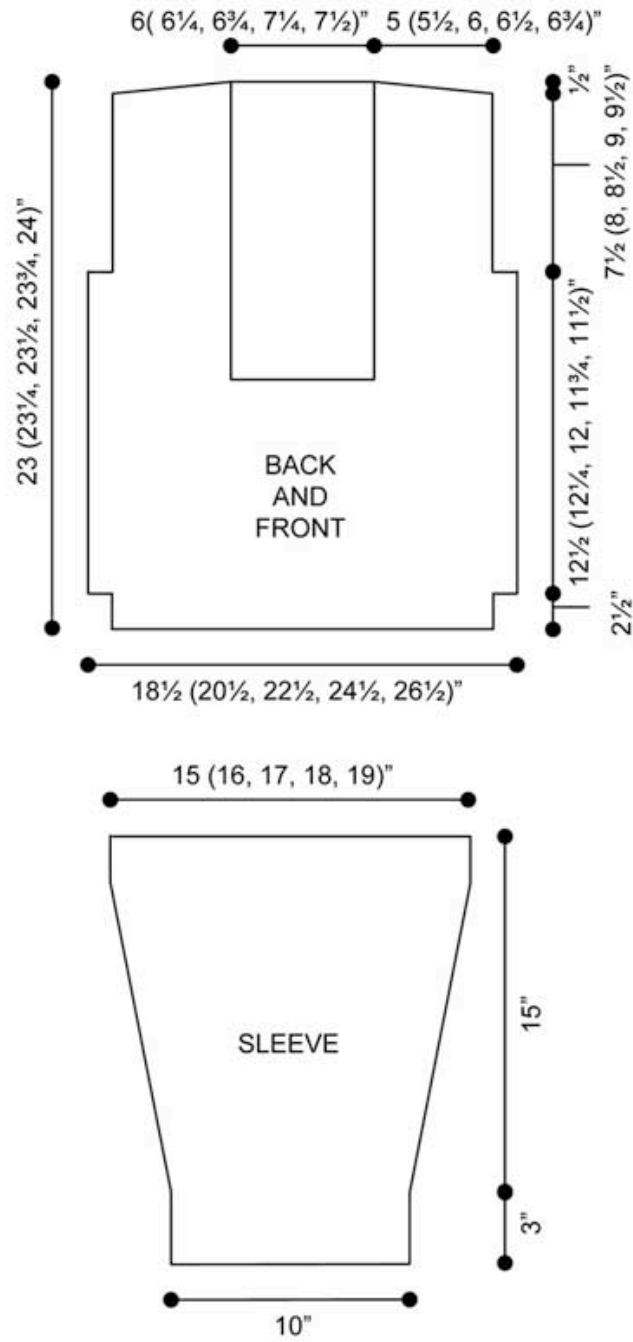
Inc 1 st each side of next row, every 4 rows 0 (0, 6, 15, 23) times, every 6 rows 3 (12, 12, 5, 0) times, then every 8 rows 10 (3, 0, 0, 0) times -- 79 (83, 89, 93, 99) sts. Work even until piece measures 18" from the beg, end with a WS row. Bind off all sts.

FINISHING

Block pieces to measurements. Sew shoulder seams. Set in sleeves; sew sleeve and side seams.

Collar: With RS facing, using circular needles and MC, pick up and k167 (169, 171, 173, 175) sts around neck edge including sts on holders. Work Row 1 of Collar pat using MC, then beg color sequence in Collar pat: 2 rows each A, B, C, and MC, changing colors at beg of each RS row until collar measures 6 (6 ½, 6 ¾, 7 ¼, 7 ½)" from pick up row; or until piece fits perfectly across bound-off sts of Front neck, ending with WS row. Bind off in knit. Overlap edges of collar and sew to Front neck at bind off.

Using yarn needle, weave in ends.



[Visit Bond America online](#)

[Visit Caron International online](#)

CARON

©2008 Caron International